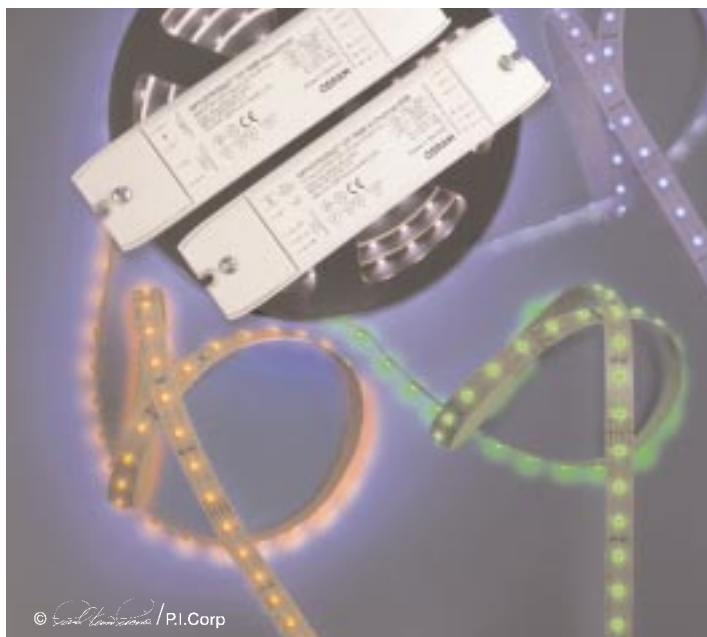


Product Information Bulletin

LINEARlight Flex Top Colormix



- Flexible circuit board with a self-adhesive backing
- Dynamic colored illumination
- Each LED contains individually powered red, green and blue chips
- Each module consists of 280 LEDs, 120° viewing angle per LED
- Modules may be subdivided into smaller coupons of 10 LEDs
- 15mm LED spacing for superior uniformity
- Size of entire module (LxW)
165" x 0.45" (4200mm x 11.5mm)
- Size of smallest unit (LxW):
5.9" x 0.45" (150mm x 11.5mm)
- Maximum assembly: 10 modules in parallel chain
- Low heat generation

OSRAM's NEW LINEARlight Flex Top Colormix provides infinite possibilities for colored lighting.

LINEARlight Flex Top Colormix modules provide dynamic control of colored illumination. Each individual LED contains red, green and blue chips in one LED package that can be controlled by OPTOTRONIC OT RGB 3CH DIM Sequencer dimming modules to yield an infinite choice of colors, including white. This unique method of color mixing within each LED, achieves better color consistency and uniformity than by combining separate, colored LEDs. The LINEARlight Flex Top Colormix is mounted on a flexible self-adhesive tape that can be conveniently field-cut with scissors. The flexible circuit board is sold by 13.8 ft. reels for long linear runs of LEDs and complex geometries. These dynamic and flexible features enable the systems to be used in a wide range of large-scale applications, including edge lighting of transparent and diffusing materials, illuminating facades and coves and architectural applications. These modules can be used wherever temperature or space limitations prevent the use of conventional means of illumination.

Product Availability

Product	Color
LINEARFLEX TOP COLORMIX-OS-LM10M-RGB	RGB



By using 3 diodes in one LED package, color mixing is achieved without color separation.

Ordering and Specification Information¹

Item Number	Ordering Abbreviation	Watts	Volts	Current (mAmps)	Viewing Angle	Color	Number LEDs	Wave Length	Luminous Intensity (cd)	Luminous Flux (lm)
70082	LINEARFLEX TOP COLORMIX-OS-LM10M-RGB									
	All Colors	2.57	24Vdc	107	120°	RGB	10	-	8	24
	Red Channel	0.6	24Vdc	25	120°	RED	10	617	3.5	10.5
	Green Channel	.99	24Vdc	41	120°	GREEN	10	525	3.5	10.5
	Blue Channel	.99	24Vdc	41	120°	BLUE	10	470	1	3

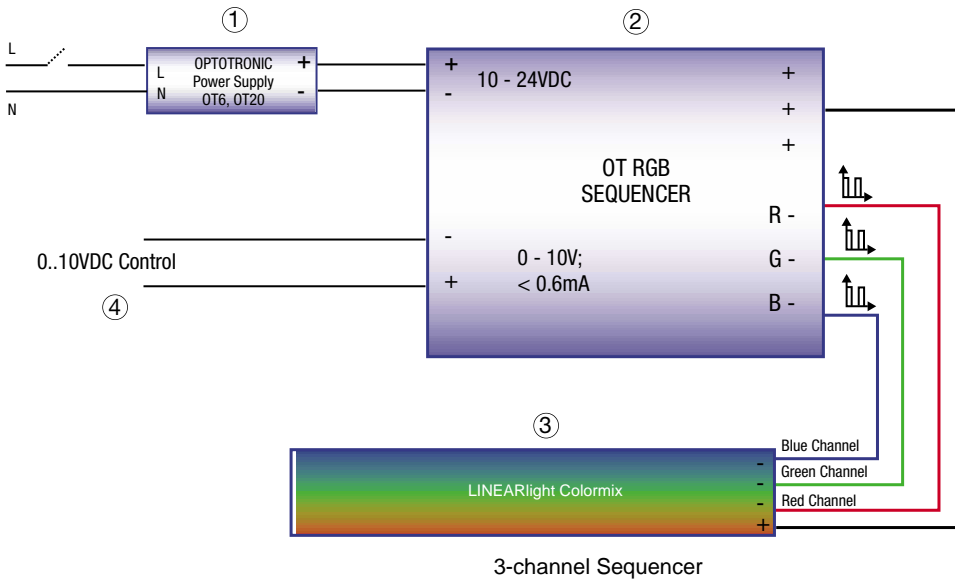
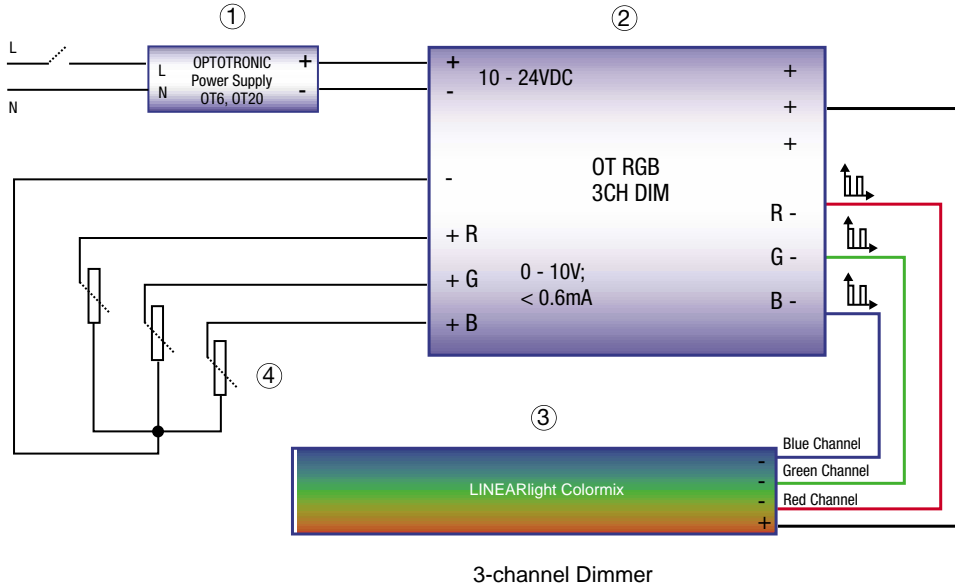
1. All information is per coupon, 10 LEDs. Module is sold as a reel of 280 LEDs.

Example Wiring Schematic

Four components are needed to form the Colormix system, OPTOTRONIC power supplies, OT RGB controllers, LINEARlight Colormix Flex, and a 0-10V controller.

With OT RGB 3CH DIM, custom colors and dynamic color changing is possible. A 0-10V signal for each color controls the light output.

With the OT RGB sequencer, the Colormix system cycles through the entire color spectrum. A 0-10V input signal controls the rate of the cycle.



Power Supply and Dimmer Ordering Information

Application	①			②			③		④	
	OPTOTRONIC Power Supply	Ordering Code	Qty	OPTOTRONIC RGB Controller	Ordering Code	Qty	Max length of LINEARlight Colormix Strip	No. of Coupons	0-10V Controllers	Qty
Colormixing, changing	OT6/100-240/24/COS	51501	1	OT RGB 3CH DIM	51517	1	11.8" (300 mm)	2	0-10V Controllers* or three 100 K ohm potentiometers	3
	OT20/120-240/24S	51512	1	OT RGB 3CH DIM	51517	1	35.4" (900mm)	6		
	OT75/120/24	51513**	1	OT RGB 3CH DIM	51517	1	165" (4200mm)	28		
Color spectrum sequencing	OT6/100-240/24/COS	51501	1	OT RGB Sequencer	51518	1	11.8" (300 mm)	2	0-10V Controllers* or one 100 K ohm potentiometer	1
	OT20/120-240/24S	51512	1	OT RGB Sequencer	51518	1	35.4" (900mm)	6		
	OT75/120/24	51513**	1	OT RGB Sequencer	51518	1	165" (4200mm)	28		

*Please contact OSRAM SYLVANIA for a list of approved 0-10V controllers

** Available 1st Quarter 2004

Application Information

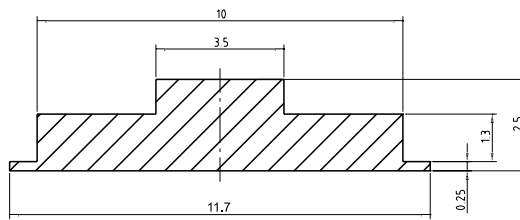
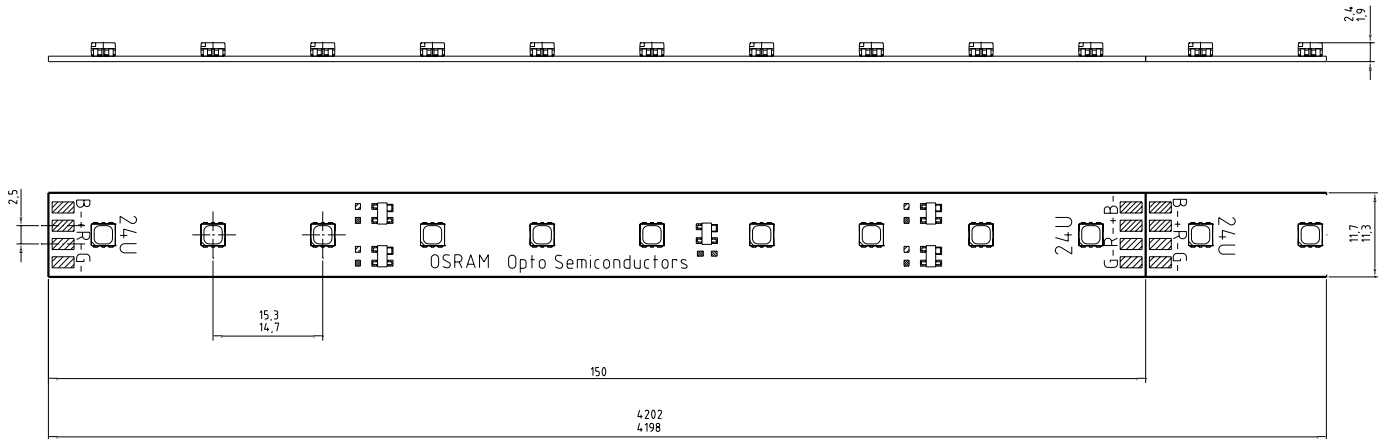
Applications

Edge-lighting
 Accent lighting
 Cove lighting
 Color mixing
 Controlled color sequencing
 Custom color applications

Application Notes

1. Small dimensions
2. Shock resistance
3. High color efficiency
4. Directional radiation characteristics
5. No IR or UV radiation
6. Able to cut and reconfigure every 10 LEDs
7. Compatible with OSRAM LED power supplies and dimmers
8. If the mounting surface is non-metal, additional thicker foam tape from companies such as 3M is recommended.

Dimensions



	Length in (mm)	Width in (mm)
Colormix Module	165 (4200)	.45 (11.5)
Smallest Coupon	5.9 (150)	.45 (11.5)
LED Spacing	.59 (15)	

Maximum Ratings

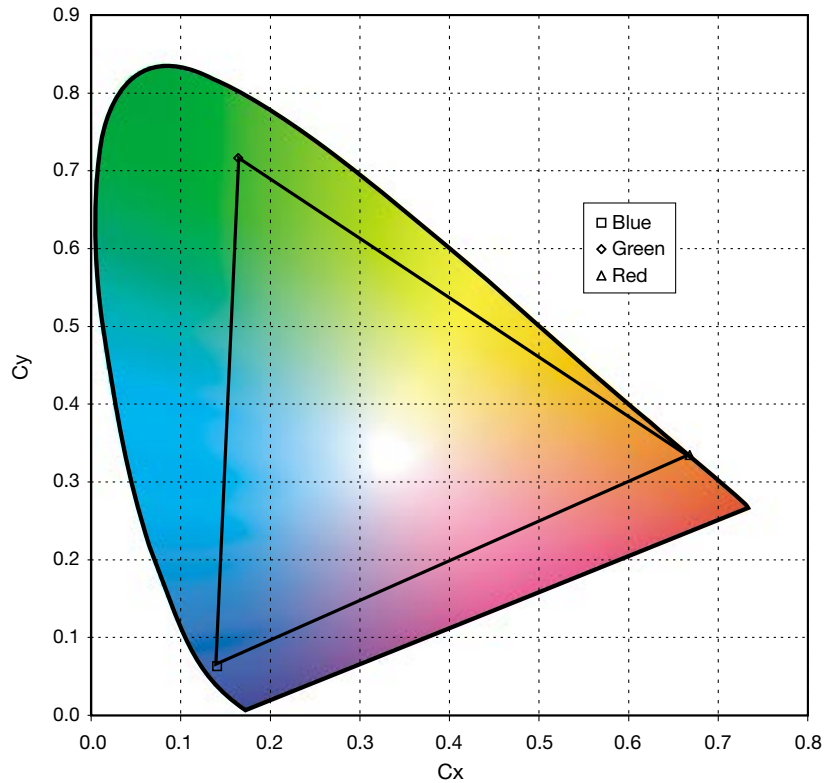
Parameter	Symbol	Values	Units
Storage Temperature Range	T_{stg}	-22... +149	°F
Maximum Operating Voltage	V_{max}	25	V_{dc}
Maximum Reverse Voltage	V_R	25	V_{dc}

Theory of Color

A combination of all three primary colors of light (red, green, and blue) appears white to the human eye. Combinations of two primaries produce the “secondary” colors — magenta, cyan, and yellow. The three primary colors can be mixed to create almost any other color light. By mixing colors, the color temperature (cct) may be adjusted to blend with the surrounding environment.

The LINEARlight Flex Top Colormix will display any dimmed color by combining the light output of closely spaced RGB chips. All three colors are placed within what appears to be just one LED.

Any color within the triangle below is achievable with the colormix system.



OSRAM SYLVANIA
National Customer
Service and Sales Center
18725 N. Union Street
Westfield, IN 46074

Industrial & Commercial

Phone: 1-800-255-5042
Fax: 1-800-255-5043

National Accounts

Phone: 1-800-562-4671
Fax: 1-800-562-4674

OEM/Specialty Markets

Phone: 1-800-762-7191
Fax: 1-800-762-7192

Photo-Optic

Phone: 1-888-677-2627
Fax: 1-800-762-7192

In Canada
OSRAM SYLVANIA LTD.
Headquarters
2001 Drew Road
Mississauga, ON L5S 1S4

Industrial & Commercial

Phone: 1-800-263-2852
Fax: 1-800-667-6772

Special Markets

Phone: 1-800-265-2852
Fax: 1-800-667-6772

Ordering Guide

LINEAR FLEX TOP

COLORMIX

LINEARlight
Colormix
Flex Top
Emitting

OS

Opto Semiconductor

LM10M

Internal ID No.

RGB

Color Code
R = Red Channel
G = Green Channel
B = Blue Channel

hi-Tech lamps

800-229-6509

info@hi-techlamps.com